

# Angelina River Water Quality Characterization

Angelina & Neches River Authority  
Clean Rivers Program Steering Committee Meeting  
May 30, 2018

**Dr. Lucas Gregory**

Texas A&M AgriLife Research,  
Texas Water Resources Institute  
LFGregory@ag.tamu.edu

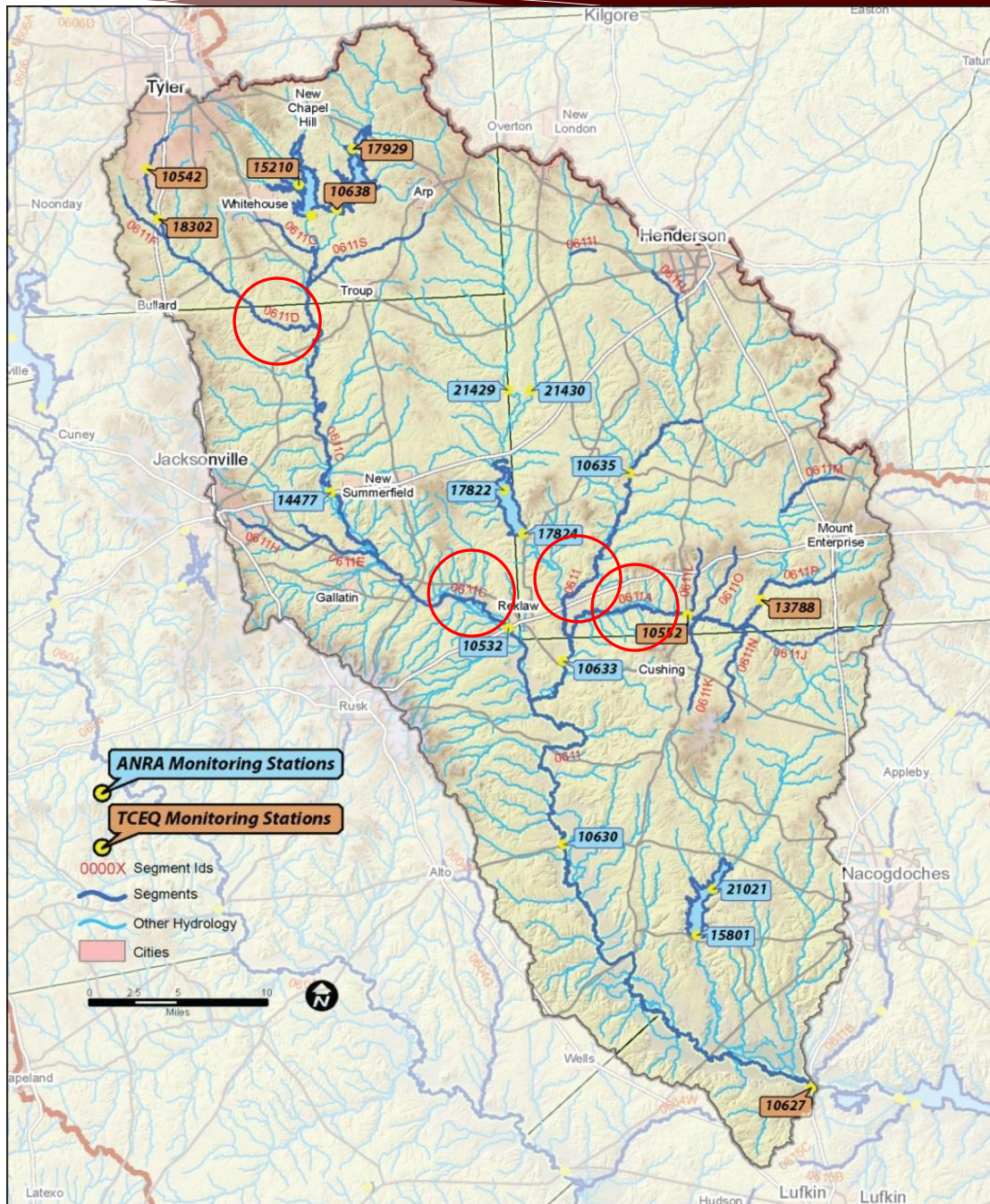


# Angelina River above Sam Rayburn

- ⦿ 4 segments impaired for elevated *E. coli* concentration
  - ⦿ Does not meet primary contact recreation standard
- ⦿ *E. coli* standard is a geometric mean of 126 CFU/100 mL
- ⦿ Concerns for low dissolved oxygen, elevated nitrate, ammonia, and total phosphorous

# Significance of Impairments

- ⦿ *E. coli* concentration is higher than allowable standard
- ⦿ Not protective of the resource, or those using it
- ⦿ Improve water quality to meet state standards according to the Clean Water Act
- ⦿ Options include:
  - ⦿ Watershed Protection Plans (WPPs)
  - ⦿ Total Maximum Daily Loads (TMDLs)

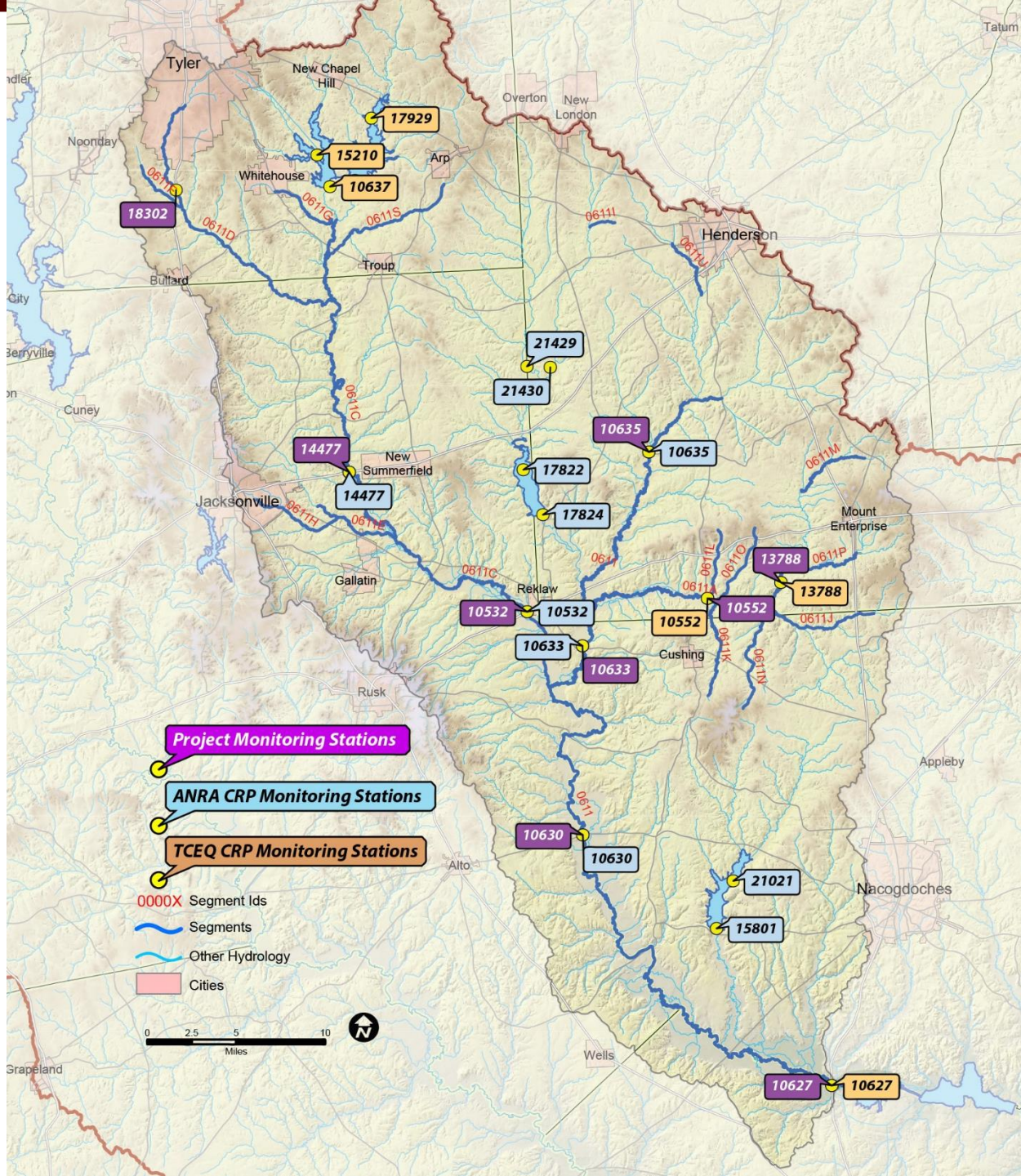


Upper Angelina River Watershed (Source: ANRA 2015 Basin Highlights Report)

# Project Goals

- ⦿ Evaluate existing data
- ⦿ Describe potential causes and sources of pollution
- ⦿ Supplement existing water quality and quantity data
- ⦿ Deliver general education campaign
- ⦿ Establish framework for developing a future watershed-based plan(s)





# Current Status

- ⦿ Data gathering nearing completion
- ⦿ Assessments underway to describe potential causes and sources of pollution
- ⦿ 3 supplemental sampling events completed; next scheduled for June 13
- ⦿ Statewide education programs being planned in the watershed: Lone Star Healthy Streams and Texas Well Owner's Network

# Questions?

Dr. Lucas Gregory

Sr. Research Scientist and Quality Assurance Officer

Texas Water Resources Institute

[LFGregory@ag.tamu.edu](mailto:LFGregory@ag.tamu.edu)

(979) 845-7869